

FOR LEASE

1198 QUEEN STREET SOUTHINGTON, CONNECTICUT



FEATURES

- 19,410 SF Freestanding Building
- 5.146 Acres
- Great Visibility in Major Retail Area
- 141 Parking Spaces
- 526 Ft. Frontage on Queen Street
- Traffic Count: 17,000 (S); 14,700 (N)
- 2 Curb Cuts on Queen Street
- RE Taxes: \$41,202.00/yr



DEMOGRAPHICS

	1 MILE RADIUS	3 MILE RADIUS	5 MILE RADIUS
Population	4,877	39,662	143,937
Total Households	2,131	16,975	59,708
Average Household Income	\$51,921	\$59,127	\$57,894

Exclusive Agent: Mark D'Addabbo Exclusive Leasing By

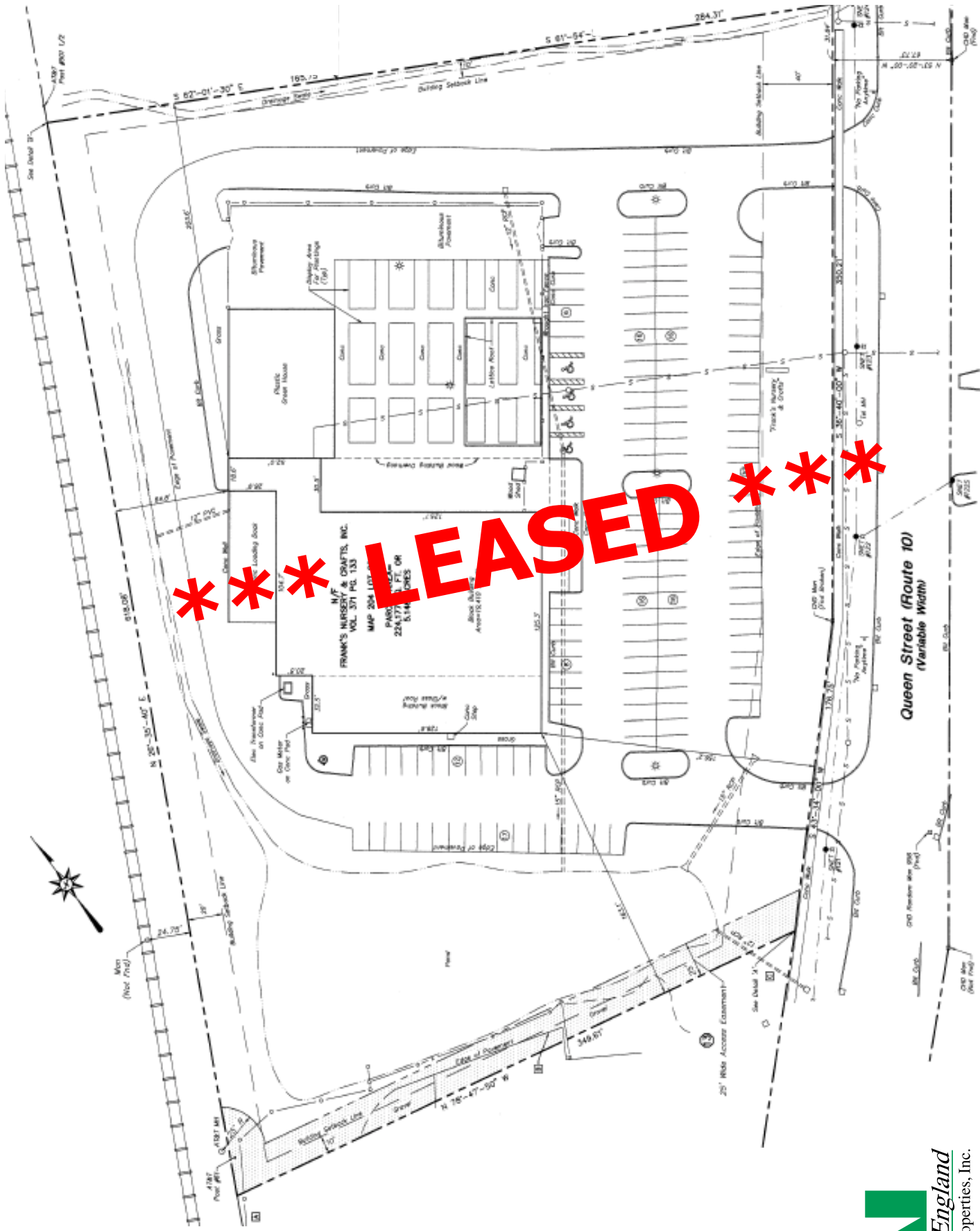
Email: markd@newenglandretail.com

1160 Silas Deane Highway
Wethersfield, Connecticut 06109


New England
Retail Properties, Inc.

Phone: (860) 529-9000
Fax: (860) 563-9667
www.newenglandretail.com

NO WARRANTY OR REPRESENTATION, EXPRESS OR IMPLIED, IS MADE AS TO THE ACCURACY OF THE INFORMATION CONTAINED HEREIN, AND SAME IS SUBMITTED SUBJECT TO ERRORS, OMISSIONS, CHANGE OR PRICE, RENTAL OR OTHER CONDITIONS, WITHDRAWAL WITHOUT NOTICE, AND TO ANY SPECIAL LISTING CONDITIONS IMPOSED BY OUR PRINCIPALS.



LEASED ***

New England
Retail Properties, Inc.

1198 QUEEN STREET SOUTHTINGTON, CONNECTICUT

NO WARRANTY OR REPRESENTATION, EXPRESS OR IMPLIED, IS MADE AS TO THE ACCURACY OF THE INFORMATION CONTAINED HEREIN, AND SAME IS SUBMITTED SUBJECT TO ERRORS, OMISSIONS, CHANGE OF PRICE, RENTAL OR OTHER CONDITIONS, WITHDRAWAL WITHOUT NOTICE, AND TO ANY SPECIAL LISTING CONDITIONS IMPOSED BY OUR PRINCIPALS.